

SCHEDULE OF BRIDGE QUANTITIES

CODE	ITEM NO.		103	SP#802	SP#803	SP#804	SP-805-3	909	929	SP1052-6
	ITEM UNIT OF BRIDGE	UNIT	DRY EXCAVATION FOR STRUCTURES	CLASS 5 CONCRETE FOR BRIDGES	REINFORCING STEEL	CONCRETE PILING 16" OCTAGONAL	STEEL PLATE GUARD RAIL (10 Ga.)	RIPRAP	BRIDGE NAME- PLATES TYPE "C"	REMOVAL OF EXISTING BRIDGE STRUCTURES
		CU. YD.	CU. YD.	LB.	LIN. FT.	LIN. FT.	CU. YD.	EACH	COMPR ITEM	
X020										
	End Bents No. 1 & 5		65	13.60	2058	336		61	1	
	Intermediate Bents No. 2, 3 & 4			17.34	3003	509				
	Two End Spans - 28' R.C. Slab			78.04	13354		116			
	Two Intermediate Spans - 28' R.C. Slab			77.52	13375		112			
	Totals for Bridge No. 3040		65	186.50	31,790	845	228	61	1	70% *

* For remainder of S.P. 1052-6 see Roadway Quantities

SCHEDULE OF BRIDGE QUANTITIES
BRIDGE OVER YELLOW CREEK
SARATOGA - FULTON
HEMPSTEAD COUNTY
ROUTE 55 SEC. 2

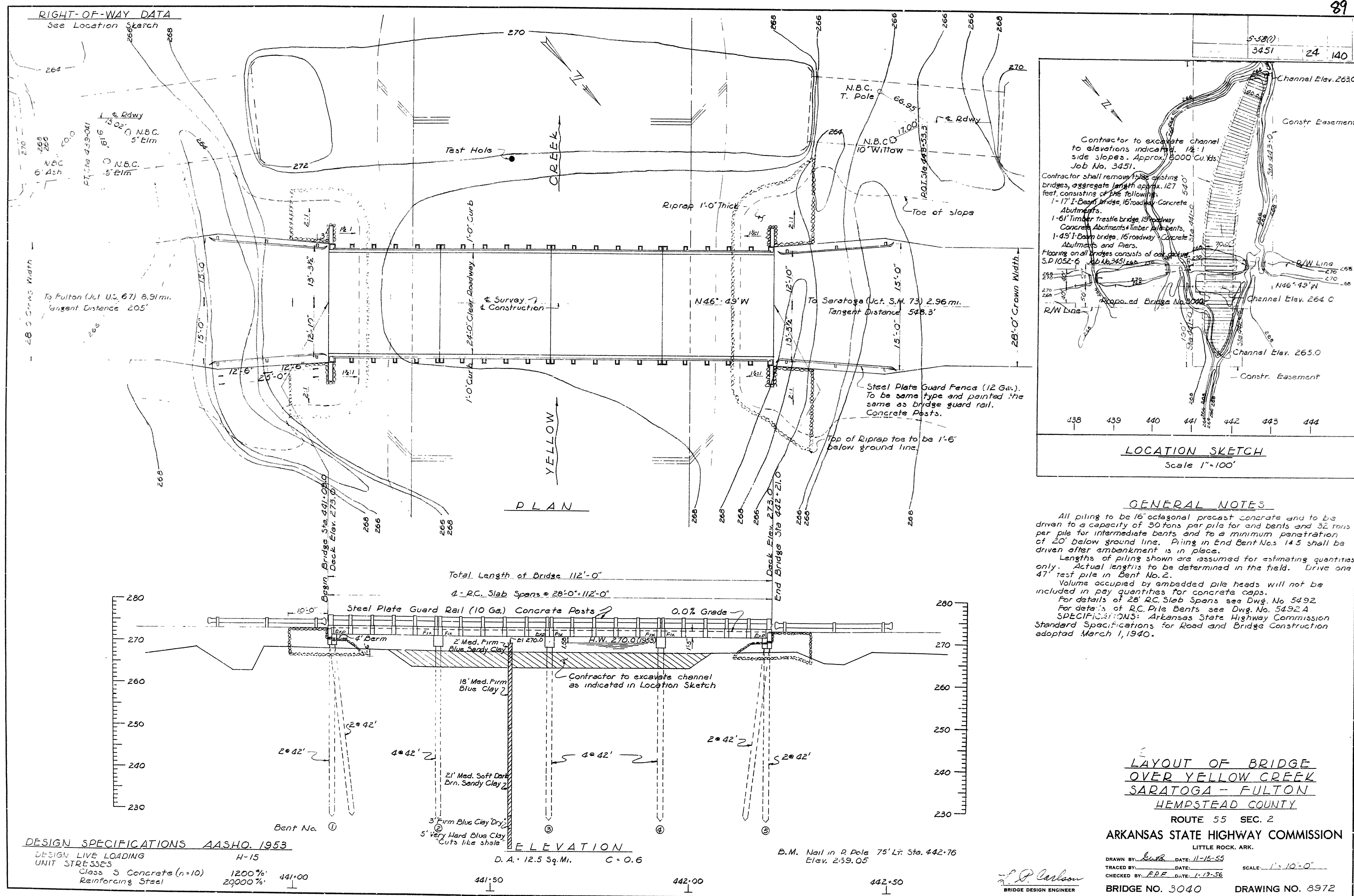
ARKANSAS STATE HIGHWAY COMMISSION
LITTLE ROCK, ARK.

DRAWN BY: hwb DATE: 11-16-55
TRACED BY: hwb DATE: 1-19-56
CHECKED BY: F.P.E. DATE: 1-19-56

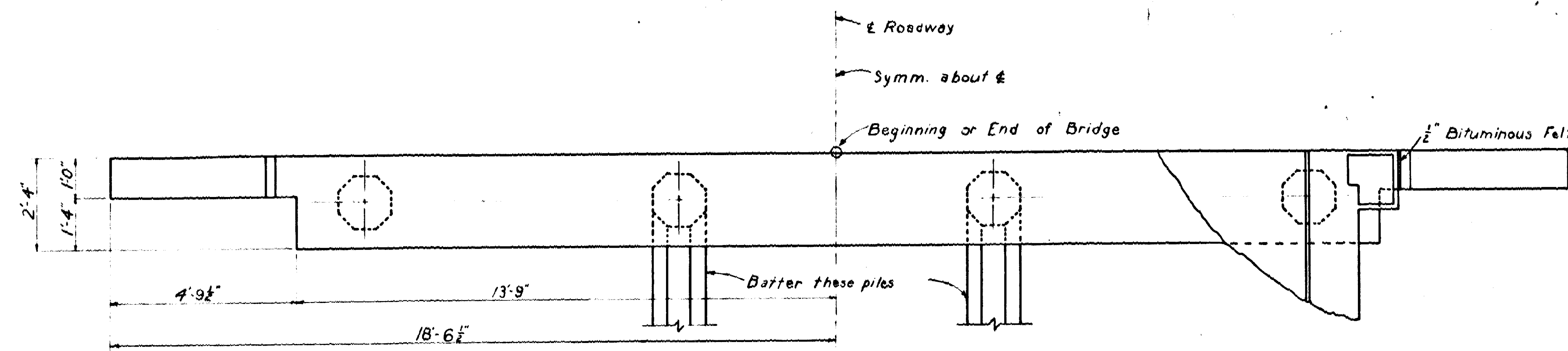
L.P. Carlson
BRIDGE DESIGN ENGINEER

BRIDGE NO. 3040

DRAWING NO. 8971



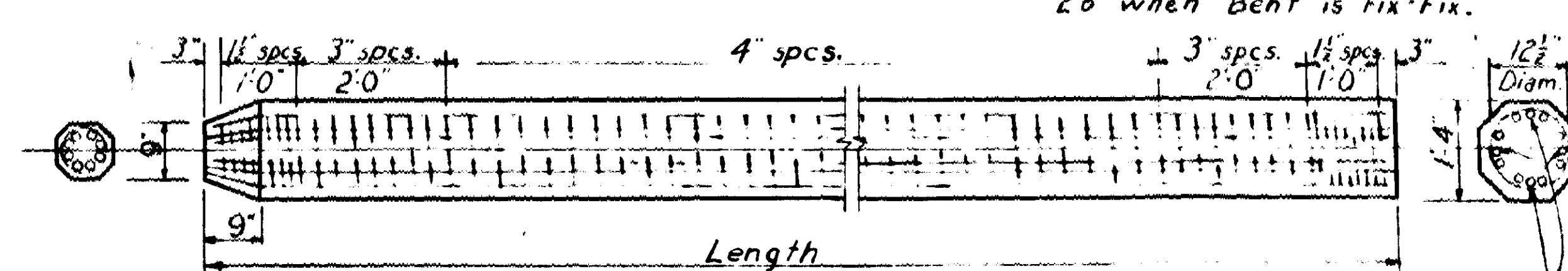
FED. ROAD DIST. NO.	STATE	PROJECT NO.	FISCAL YEAR	SHEET NO.	TOTAL SHEETS
6	ARK.				
STATE JOB NO.					



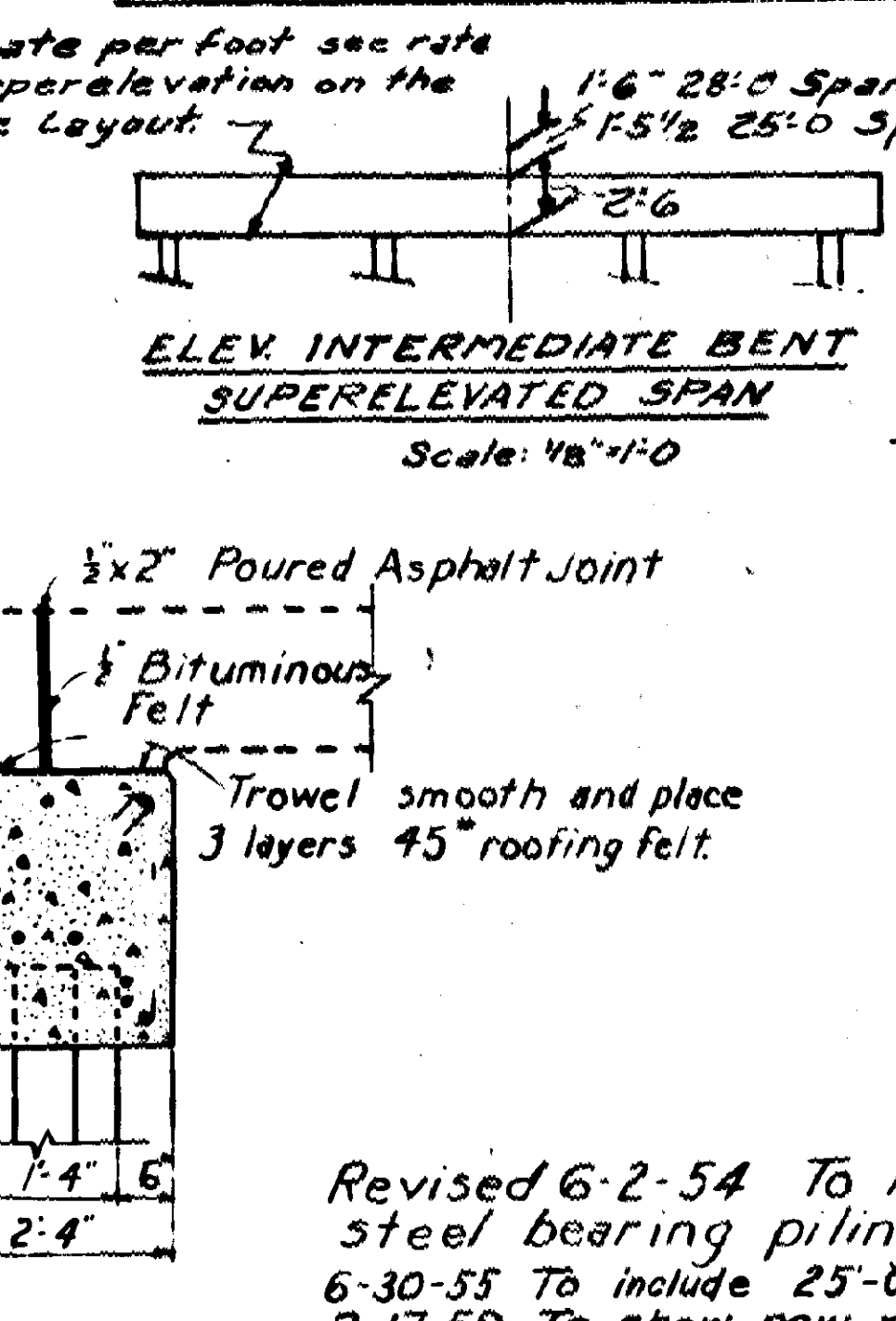
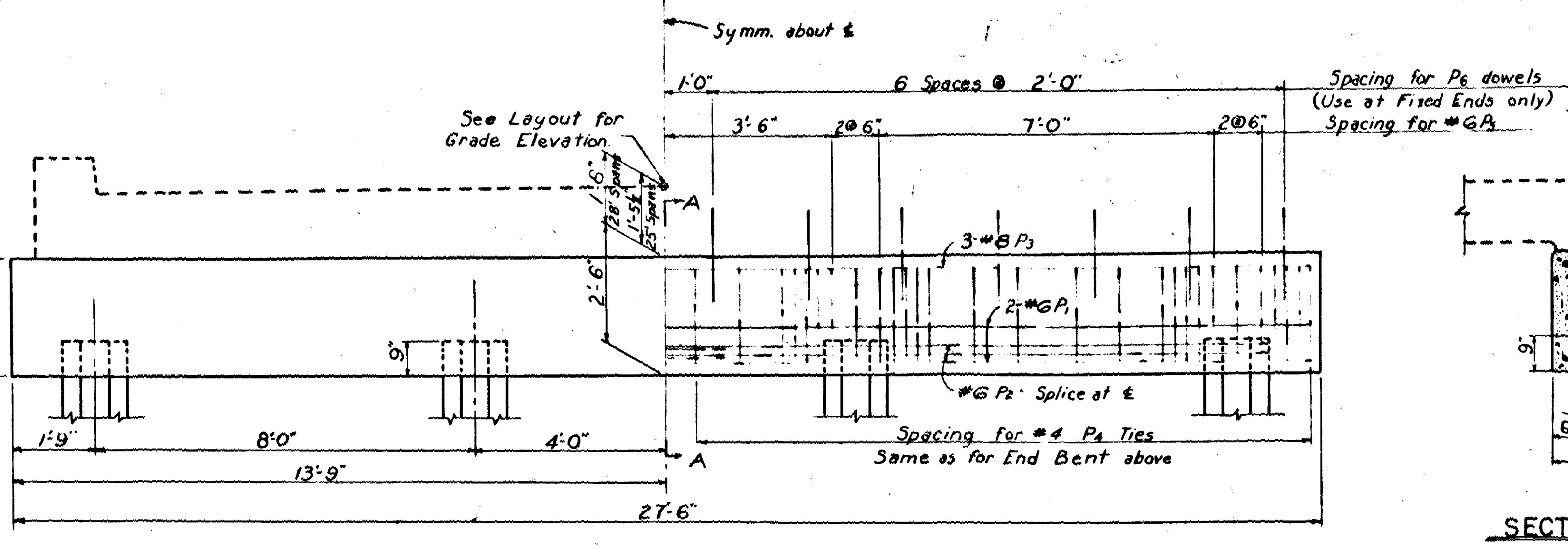
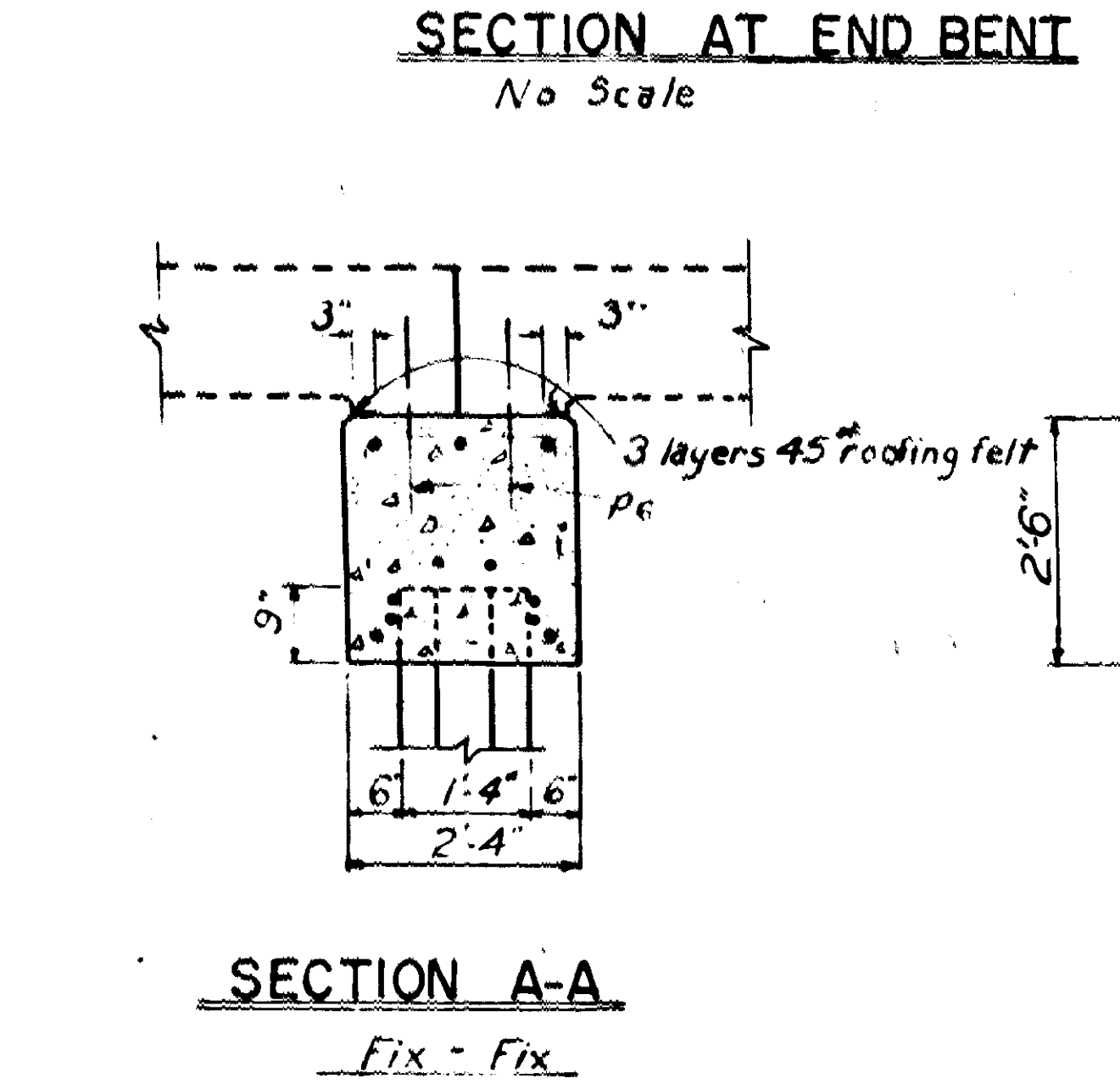
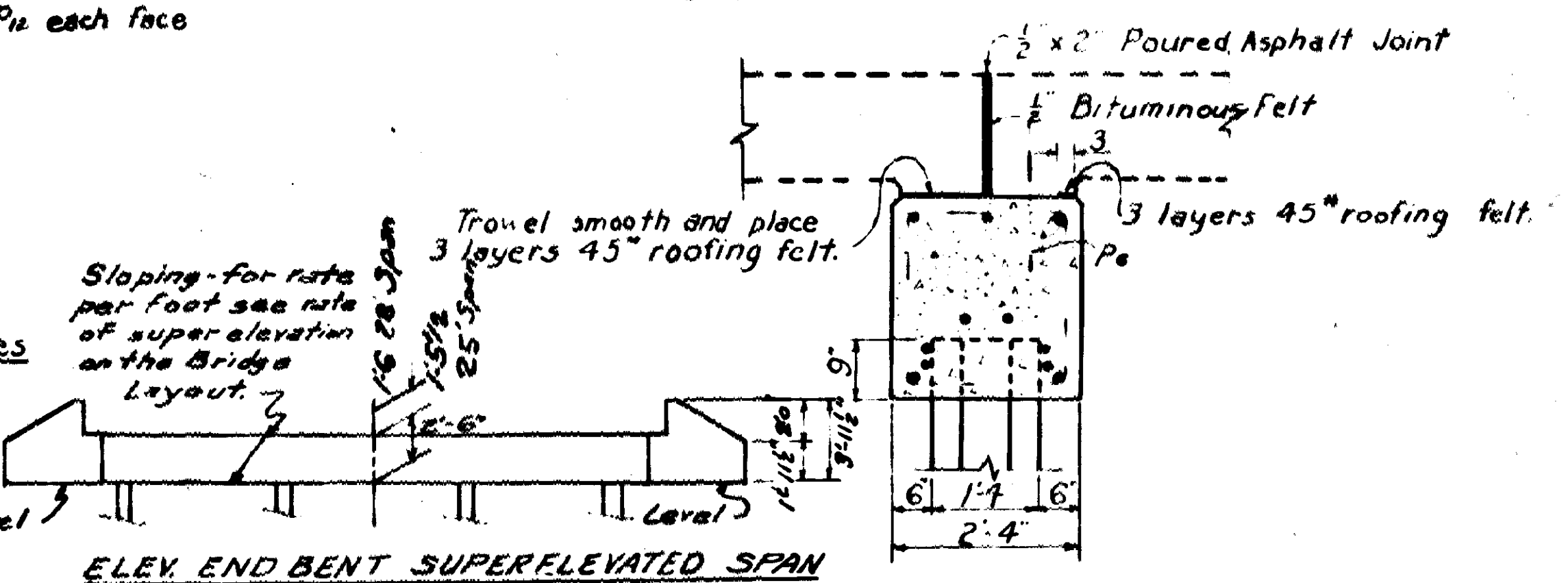
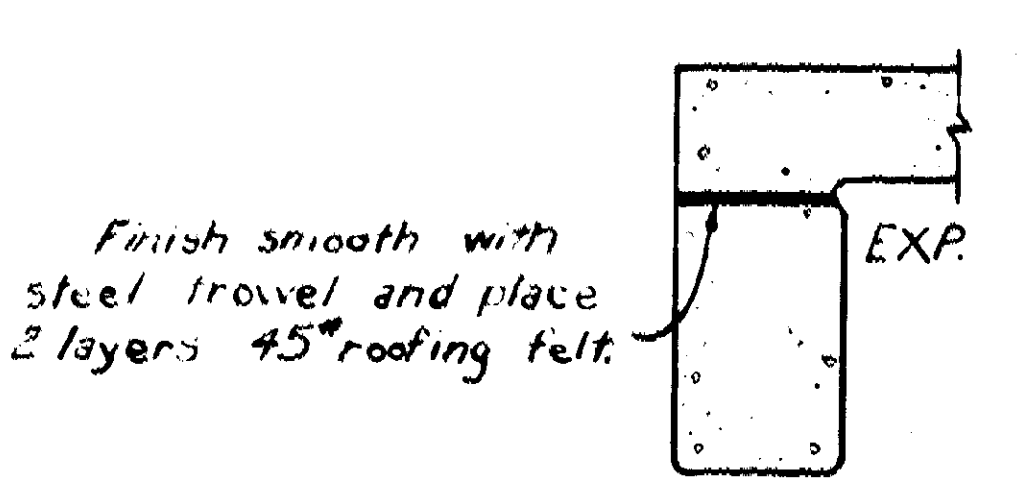
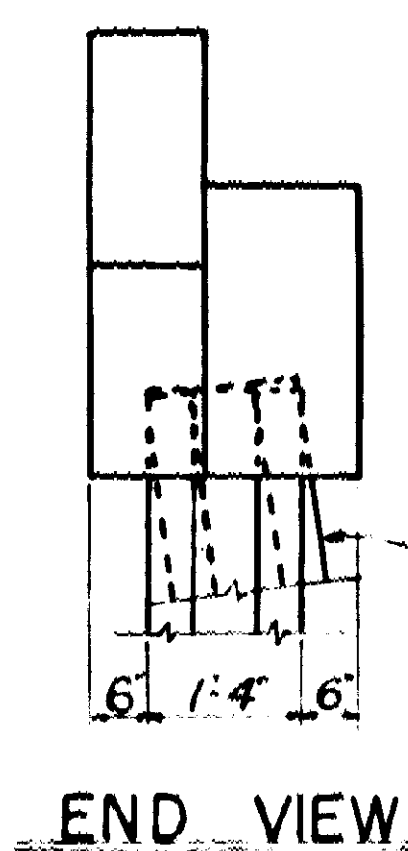
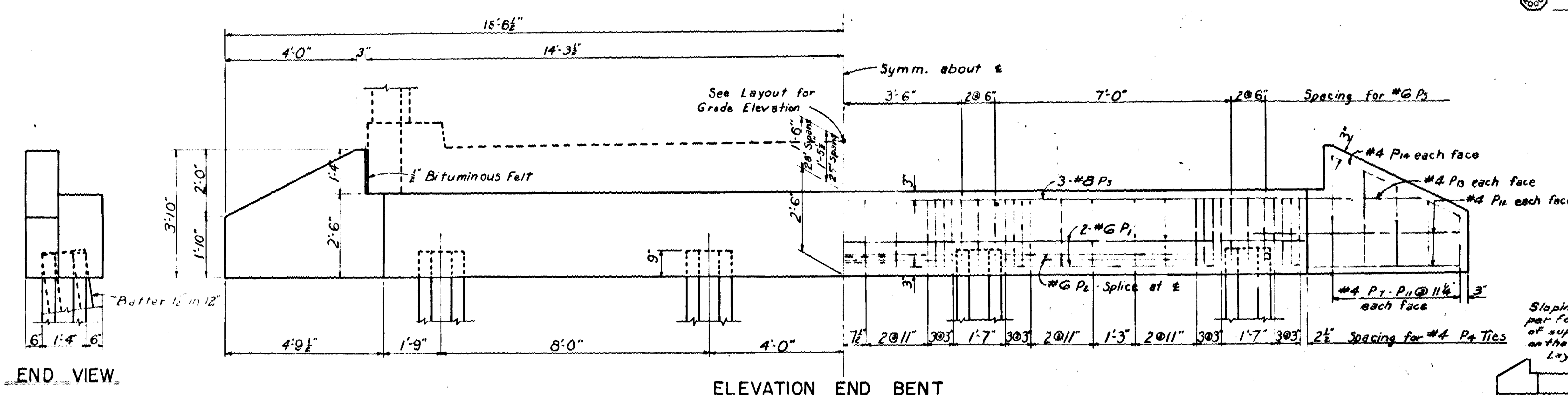
BENT BARS									
NO. IN END BENT	NO. IN INTERM. BENT	MARK	SIZE	LENGTH	A	B	BENDING DIAGRAM		
4	4	P ₁	#6	29'3"	14'-0"	1'-5"			
4	4	P ₂	#4	8'-9"	2'-1 1/2"	1'-11 1/2"			
12	12	P ₃	#6	6'-1"	2'-1 1/2"	1'-11 1/2"			

Dimensions are to centers of bars

STRAIGHT BARS				
NO. IN END BENT	NO. IN INTERM. BENT	MARK	SIZE	LENGTH
4	4	P ₁	#6	27'-2"
3	3	P ₂	#8	27'-2"
14	14 str 2	P ₃	#6	2'-0"
4		P ₄	#4	1'-7"
4		P ₅	#4	2'-7"
4		P ₆	#4	2'-1"
4		P ₇	#4	3'-6"
8		P ₈	#4	7'-0"
4		P ₉	#4	5'-9"
4		P ₁₀	#4	4'-3"



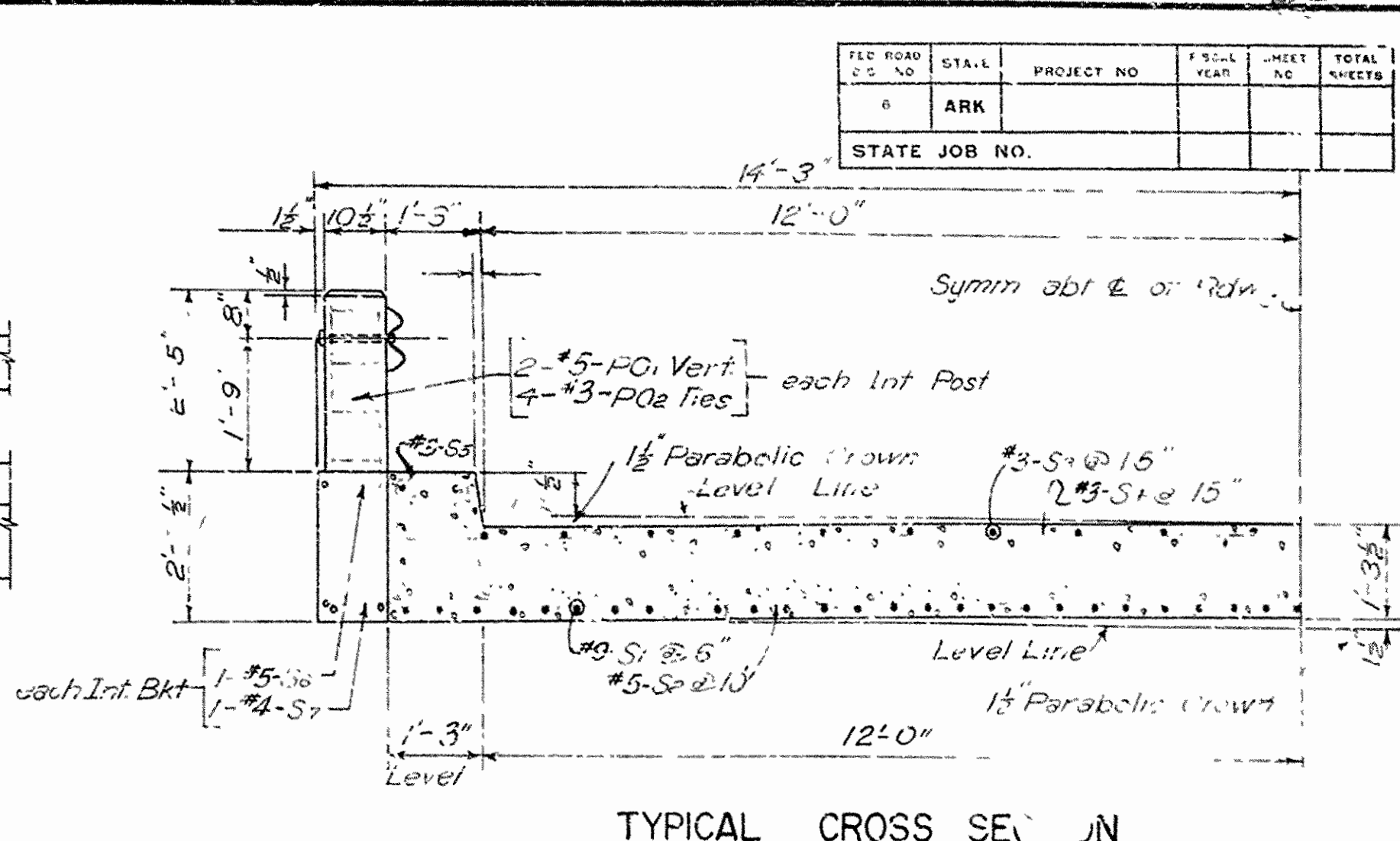
Reinforcing: Vertical Bars { 8-#6 Lengths to 35' } #2 Spiral
 For lengths over 45' add 4-#6 thru middle third of pile.



GENERAL NOTES:
 All concrete to be Class "S" and to be poured in the dry for additional General Notes and details of slab spans see Drwg. No. 5492 or 5463.
 Revised to show Super-elevated Caps E.R.B. 7-18-59

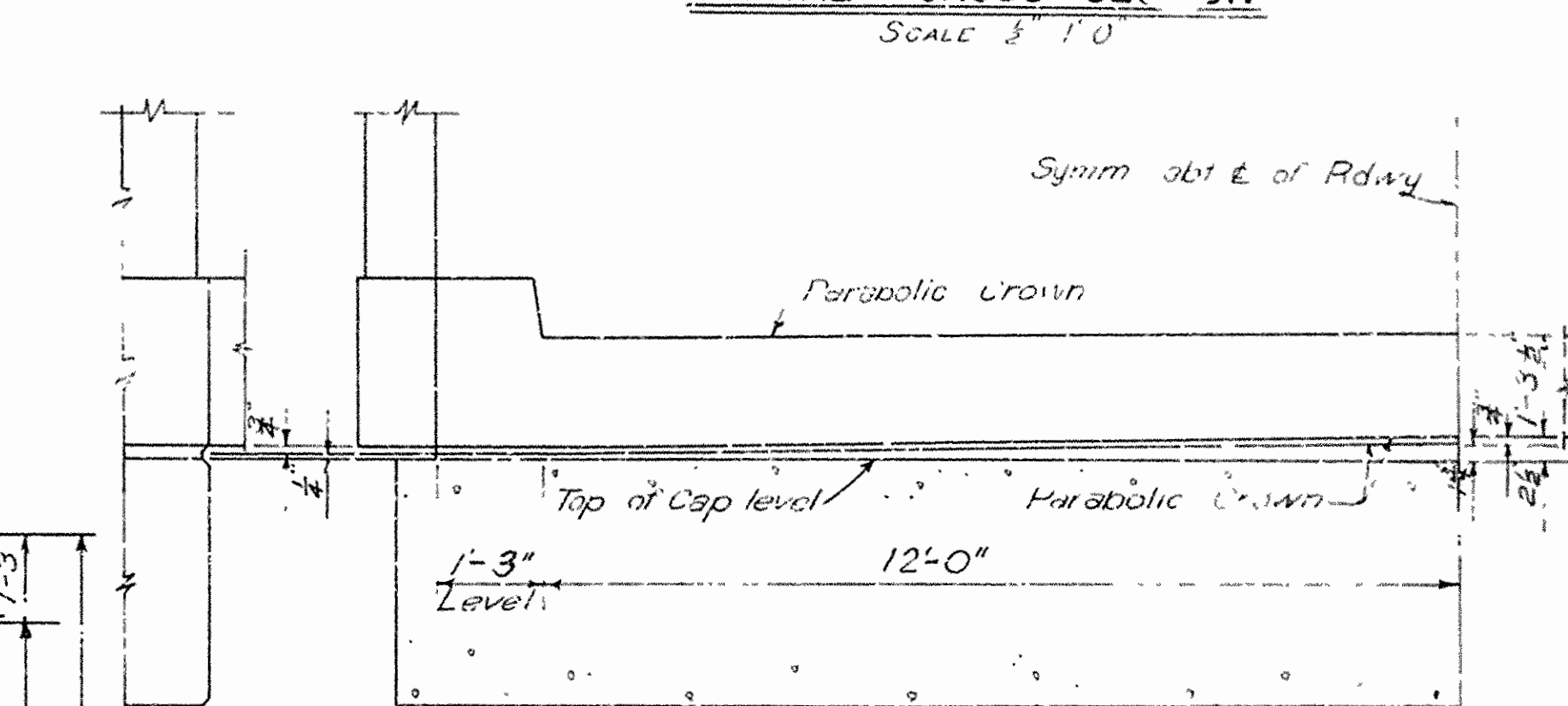
DETAILS OF
 STANDARD R.C. PILE BENTS
 FOR 25'-0" & 28'-0" R.C. SLAB SPANS
 Revised 6-2-54 To include steel bearing piling, L.P.C.
 6-30-55 To include 25'-0" spans, W.I.R.
 2-17-59 To show new reinforcing bar designations, R.L.C.

ARKANSAS STATE HIGHWAY COMMISSION
 LITTLE ROCK, ARK.
 Drawn By: *W. J. ...* Date: 6-2-54
 Traced By: *A.E.C.* Date: 6-10-55
 Checked By: *W.M.* Date: 8-10-55
 Scale: 1/2" = 1'-0"



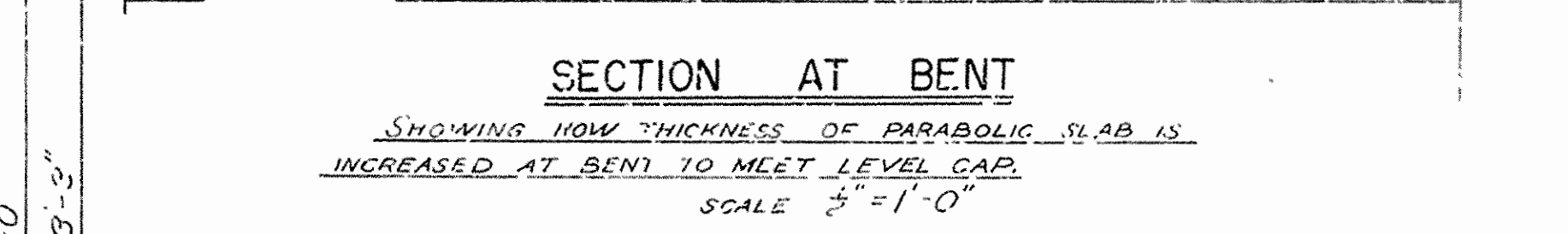
ELEVATION

SECTION ON 6 OF RDWY.



HALF PLAN END SPAN

HALF PLAN INTERMEDIATE SPAN



LIST OF REINFORCING STEEL

BENDING DIAGRAM

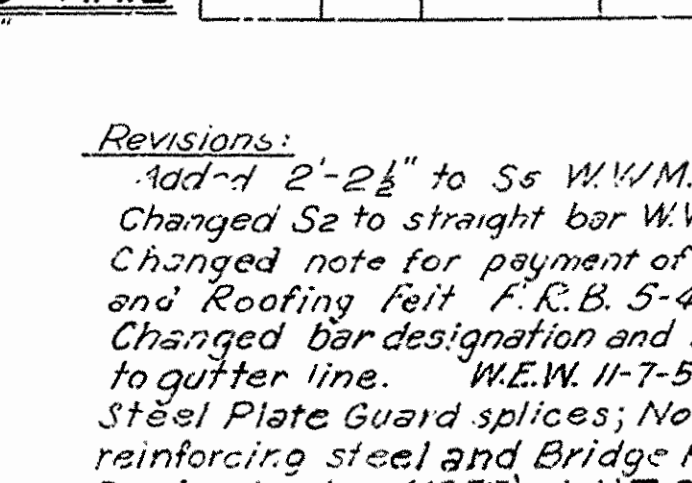
MARK	SIZE	LENGTH
S1	#9	27'-9"
S2	#5	26'-2"
S3	#3	27'-8"
S4	#3	26'-2"
S5	#3	5'-10"
S6	#5	10'-2"
S7	#4	6'-7"
S8	#5	2'-7"
S9	#4	3'-6"
PO1	#5	9'-1"
PO2	#3	2'-10"
PO3	#3	4'-4"
PO4	#5	4'-3"

Dimensions are to ctrs of bars

H 15 LOADING (A.A.S.H.O. 1957 REVISED)

LOAD DISTRIBUTION TO SLAB:
Dead Load = 209 $\frac{\text{lb}}{\text{ft}^2}$
Live Load = 0.182 Wheel/ft. width
Impact = 30%

OR LANE LOADS
Uniform Load = 43.6 #/ft
Concentrated LL = 1227 #
Impact = 30%

SECT. OF GUARD RAIL

Revisions:
 Add'd 2'-2 1/2" to Ss W.W./M. 5-26-54
 Changed S2 to straight bar W.W/M 11-1-54
 Changed note for payment of Bituminous
 and Roofing felt F.R.B. 5-4-56
 Changed bar designation and roadway
 to gutter line. W.E.W. 11-7-57
 Steel Plate Guard splices; Notes for
 reinforcing steel and Bridge Railings;
 Design Loading (1957). L.H.T. 9-15-59
 Revised Guard Rail Note J.M.H. 7-15-60

H. 7-15-66
ARKANSAS STATE HIGHWAY COMMISSION
LITTLE ROCK, ARK.

Drawn By: W.V.M. Date: 5-5-52
Traced By: L.W.H. Date: 6-15-55 and PAF 6-17-55 Scale: As noted
Checked By: --- Date: 5-13-56

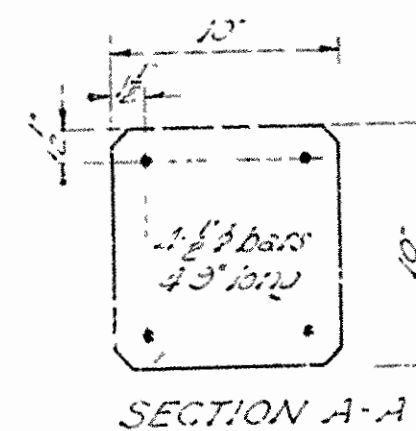
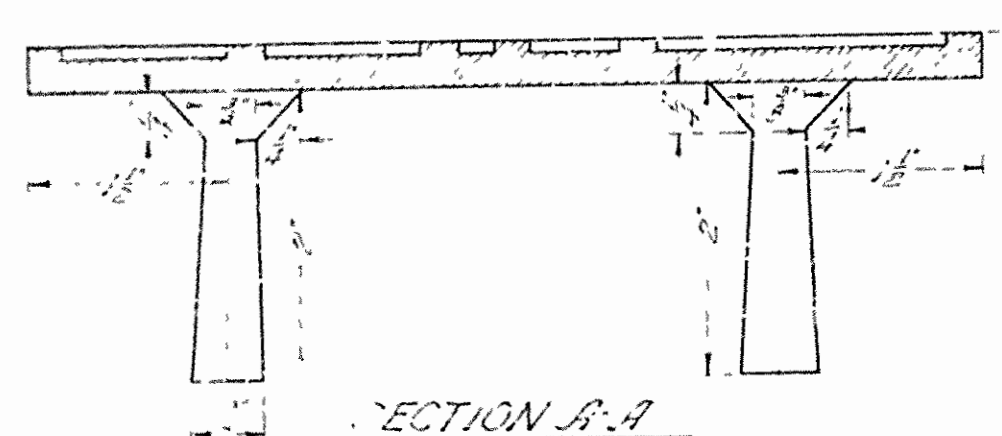
BRIDGE NO. DRAWING NO. 5492

FED. ROAD DIST. NO.	STATE	PROJECT NO.	FISCAL YEAR	SHEET NO.	TOTAL SHEETS
6	ARK.				
STATE JOB NO.					

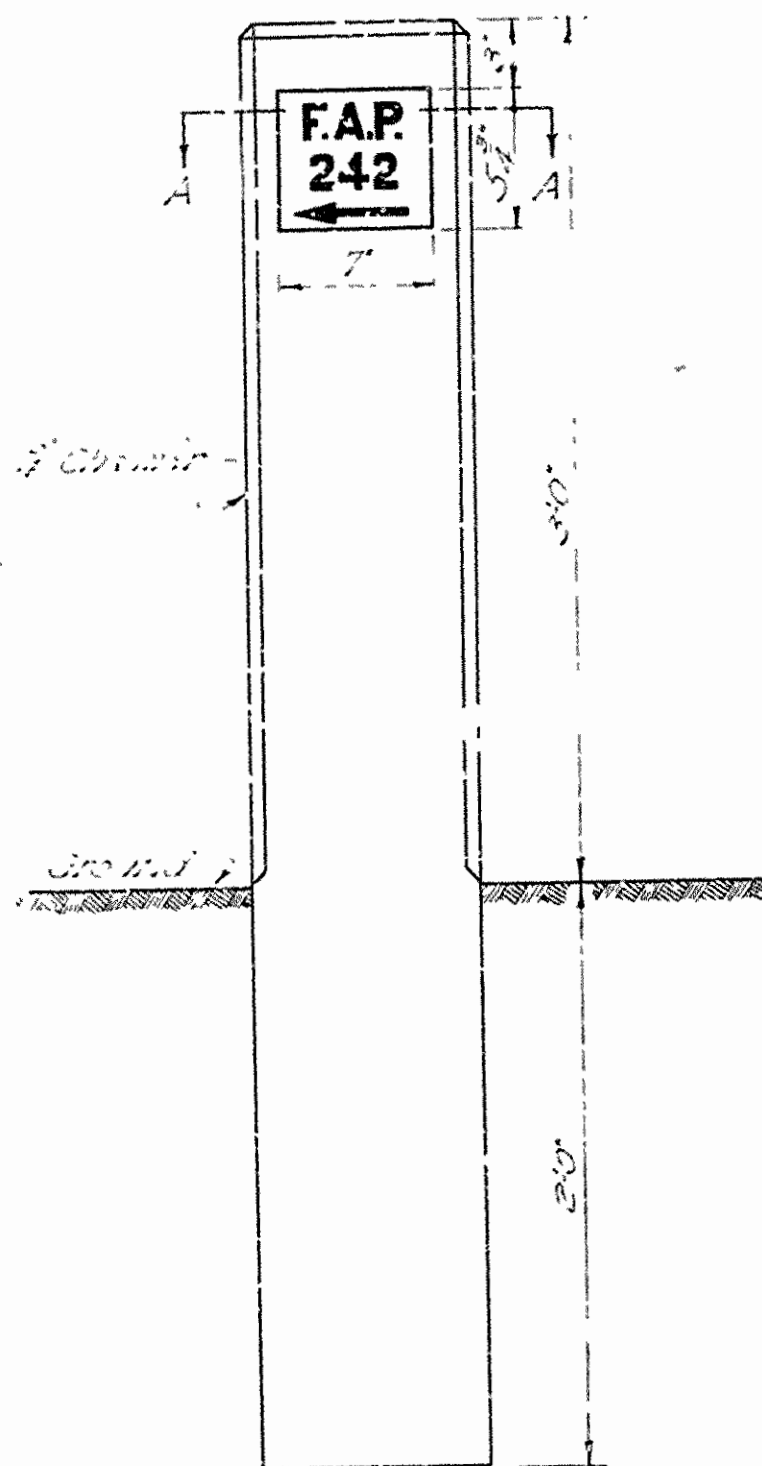


DETAIL OF MARKER PLATE TYPE AL-1
FOR FEDERAL AID PROJECTS-PRIMARY

Type AL-1 plate to conform in every respect to Type AL-1 except that direction of travel shall be reversed.
Note: When used on a project, the arrow shall be placed on the right hand side of the road.



SECTION A-A



SECTION B-B



DETAIL OF MARKER PLATE TYPE AL-2
FOR FOREST HIGHWAY PROJECTS

Type AL-2 plate to conform in every respect to Type AL-1 except that direction of travel shall be reversed.
Note: When used on a project, the arrow shall be placed on the right hand side of the road.

Note:
Concrete to be Class A (1:2:4 Mix)
Numerals shown to be 1/2" high number
at this projection of the marker is placed.

QUANTITIES PER MARKER	
Class A Concrete	Painting Steel
2.13 Cu. Yds.	13 Lbs.

SPECIFICATIONS FOR MARKER PLATES

Plates to be either Bronze or Aluminum.
Body to be 1/4" thick. Two tapering cone lugs 3/8" to 1/2" long.
Height One Bronze plate 3.5 Lbs. approx.
Height One Aluminum plate 1.1 Lbs. approx.
Bronze: U.S. Government Specification for Statuary Bronze.
Aluminum: A.S.T.M. Specifications Serial designation B26-41T.

INSTRUCTIONS FOR PLACING MARKERS
ON FEDERAL AID OR FOREST HIGHWAY PROJECTS

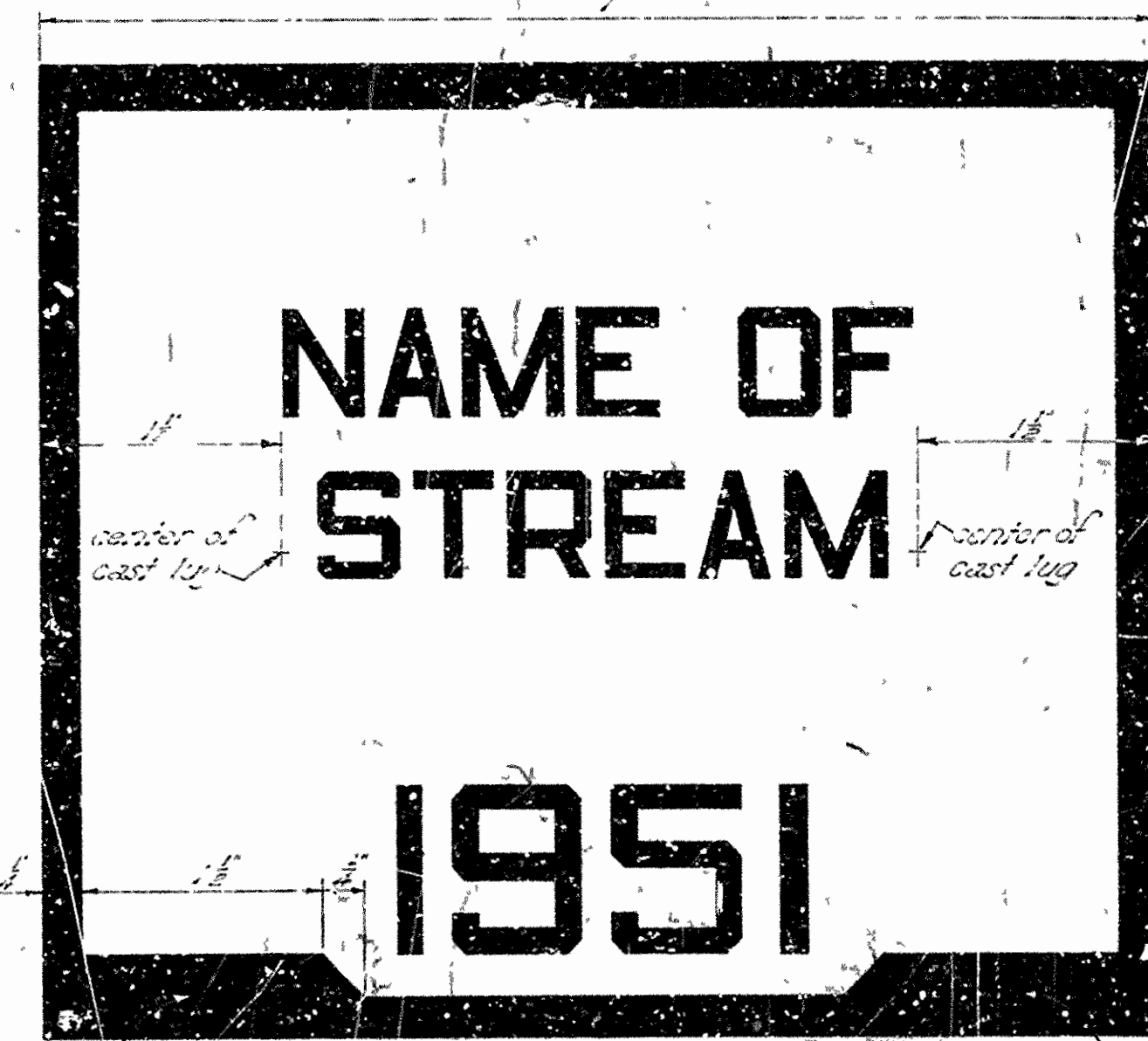
One marker shall be placed at each end of a Federal Aid or Forest Highway Project crossing a stream, except in the case of a bridge approach. Markers will be placed on the right hand side of the road with respect to the direction of travel, and with the arrow on the marker plate indicating its proper direction of travel. On projects ending with an embankment section, the marker shall be placed between the top of the bank slope and the fill line.

On projects ending with an embankment section, the marker shall be placed between the top of the embankment slope and the fill line.

On municipal projects, place marker plate in the face of curb, when and where specified on the plans.

Where a bridge or several bridges, without graded approaches, form a project or section, one marker plate shall be placed on either end of each bridge as follows:
In the end rail post on bridges having concrete railing.
In the face of the abutment near the shore on bridges not having concrete railing.
Where the continuity of a project or section is broken thru the introduction of an exception, other than a bridge without graded approaches, a marker shall be placed at each point where the project or section is stopped and where resumed.

FEDERAL AID AND FOREST HIGHWAY PROJECT MARKERS



Stamp the design loading here with 3 steel letters and numerals. Example: H-10.
Stamp the bridge number here with 3 steel numerals. Example: 2785.

TYPE C BRIDGE NAME PLATE-STYLE 1-FULL SIZE

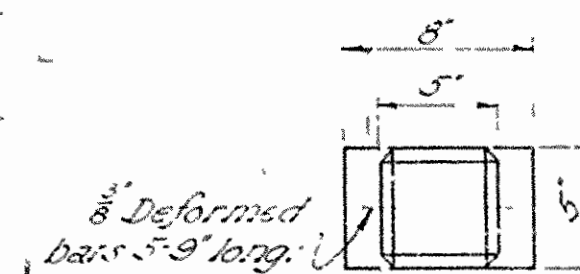


Stamp the design loading here with 3 steel letters and numerals. Example: H-10.
Stamp the bridge number here with 3 steel numerals. Example: 2785.

TYPE C BRIDGE NAME PLATE-STYLE 2-FULL SIZE

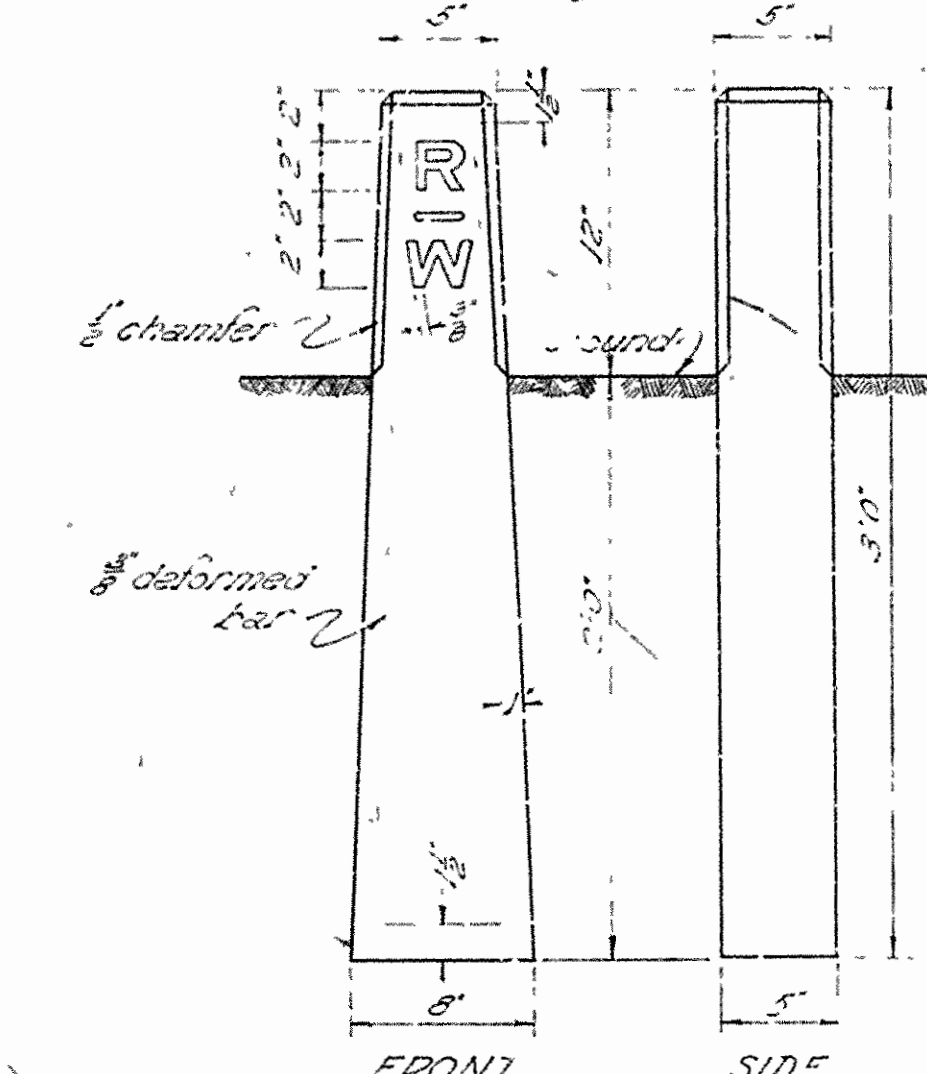
SPECIFICATIONS FOR NAME PLATES

Plates to be either Bronze or Aluminum.
Body to be 1/4" thick. Two tapering cone lugs 3/8" to 1/2" long.
Bronze: U.S. Government Specification for Statuary Bronze.
Aluminum: A.S.T.M. Specifications Serial designation B26-41T.
The border and all lettering to be raised 3/16" above face of plate. Top surface of raised border and lettering to be polished.
All lettering to be plain Gothic, square cut and not tapered.
The number of plates required, type and location, to be as shown on Plans.
Name of Stream to be varied to suit each bridge.
Shop drawings of Bridge Name Plates shall be submitted for approval before casting is begun.



Deformed bars 5/8" long.
Letters to be indented to a depth of 3/16" on one face only.

QUANTITIES PER MARKER	
Class A Concrete	Reinforcing Steel
2.13 Cu. Yds.	13 Lbs.



Note: Markers shall be placed at 100 or 120 foot intervals along the right of way line, where no changes in width or direction occur at such points as changes in width occur and at the PC and PT of all curves, as shown on the plans or as directed by the Engineer. Posts to be set so letters face roadway.
Concrete to be Class A (1:2:4 Mix).

RIGHT OF WAY MARKERS

Do not scale

FEDERAL AID AND FOREST HIGHWAY PROJECT MARKERS

RIGHT OF WAY MARKERS

BRIDGE NAME PLATES

ROUTE SEC.

ARKANSAS STATE HIGHWAY COMMISSION
LITTLE ROCK, ARK.

Drawn By: W. J. Ford Date: 1-1-51
Traced By: W. J. Ford Date: 1-1-51
Checked By: W. J. Ford Date: 1-1-51
BRIDGE NO. 2383 DRAWING NO. 2383

W. J. Ford
Superintendent